

Alizarin Blue 2327

Water Soluble Dye, Item Code D2327P

Color versus Concentration

Shade progress from pink to magenta as concentration increases.*



General Description

This is a water soluble anthraquinone dye having good light fastness and above average pH stability.

Physical & Chemical Properties

Chemical nature: water soluble anthraquinone dye

Form: powder

Chemical Formula: $C_{20}H_{13}N_2NaO_5S$

Molecular weight: 416.4

Ionic nature: anionic

Melting Point: $\sim 350^{\circ}C$ ($662^{\circ}F$)

Bulk density: variable, typically 0.55 - 0.75 g/cm³

Wavelength of max absorbance : 600-602 nm (water)

Molar Absorptivity, ϵ : 1.05×10^4 L \cdot cm⁻¹ \cdot mol⁻¹

Solubility Data water: 10 g/l Ethanol: 4 g/l

EGME: 30 g/l

Light fastness: 5 (1=poor, 8=excellent)

Recommended pH range is 2.5 - 12.0

Standard Packaging

1-lb jar (12/cs) 5-lb jar (4/cs) 25-lb pail 55-lb box

Custom packaging available.

Storage & Handling

Store in a closed container in a dry environment. Handle carefully to minimize dust.

Shelf Life: 6 years from date of manufacture.

Transportation

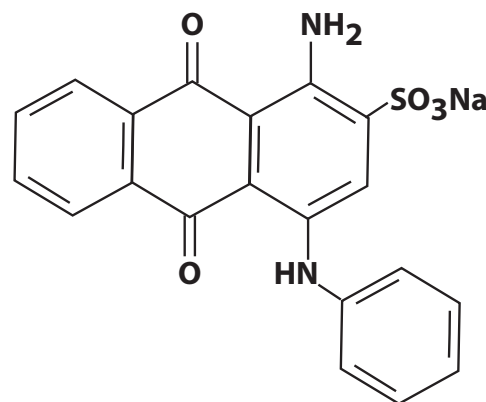
Shipping: Not regulated for transport by US DOT or IATA .

Contains no dangerous goods.

Identification

Color Index (CI) Generic Name:	Acid Blue 25
Color Index Constitution Number:	62055
CAS Number	6408-78-2
EC (EINECS) Number	229-068-1
PubChem CID	23675622
ECHA Infocard	100.026.426
HS Code:	3204.12
Synonyms: Alizarin(e) Blue AS, Alizarin(e) Fast Blue A	

IUPAC Name: sodium;1-amino-4-anilino-9,10-dioxoanthracene-2-sulfonate



Common Applications

Household and Industrial Cleaning Products (pH 2.5 - 12)
Detergents
Chemical Compounding

Typical Use Rates

Coloring Liquid Products: This dye can be added at varying concentrations to produce shades ranging from light to strong. The following use rates represent typical concentrations when coloring liquid products:

Light shade:	15 ppm	(1-lb per 8,000 gallons)
Medium Shade:	30 ppm	(1-lb per 4,000 gallons)
Heavy Shade:	50 ppm	(1-lb per 2,400 gallons)

* Disclaimer: Color shown is a CMYK approximation only. Actual color may vary depending upon concentration and the nature of the product to which this dye is applied. It is essential that thorough testing be completed on a sample basis before proceeding to use this dye on a production level. To our best knowledge, the information and recommendations contained herein are accurate and reliable. However, this information and our recommendations are furnished without warranty, representation, inducement, or license of any kind, including, but not limited to, the implied warranties of merchantability and fitness for a particular use or purpose. Customers are encouraged to conduct their own tests and to read the available product literature carefully before using this product.